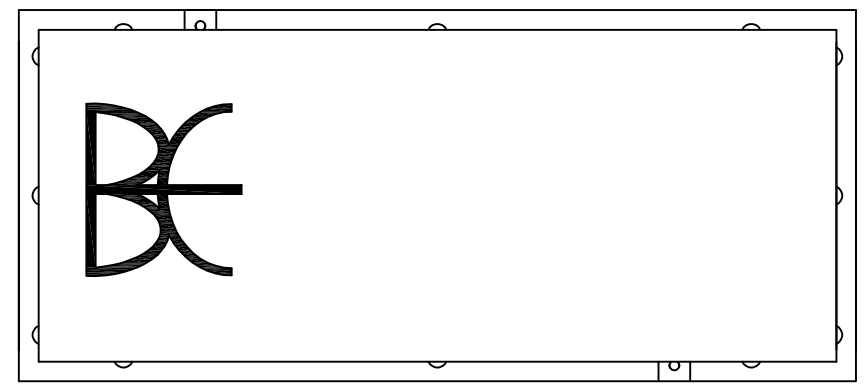
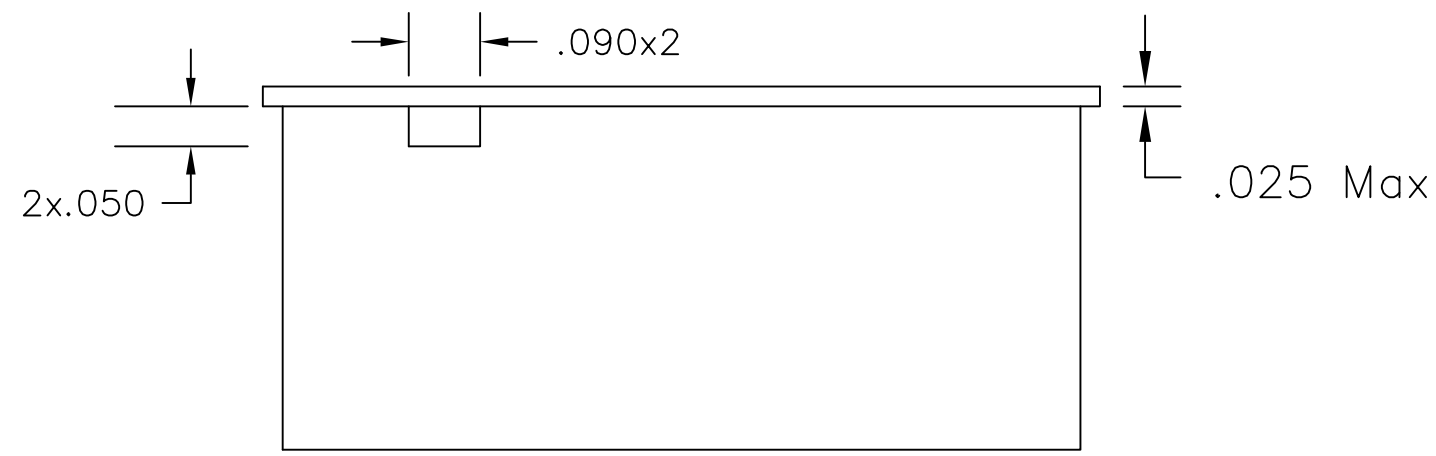
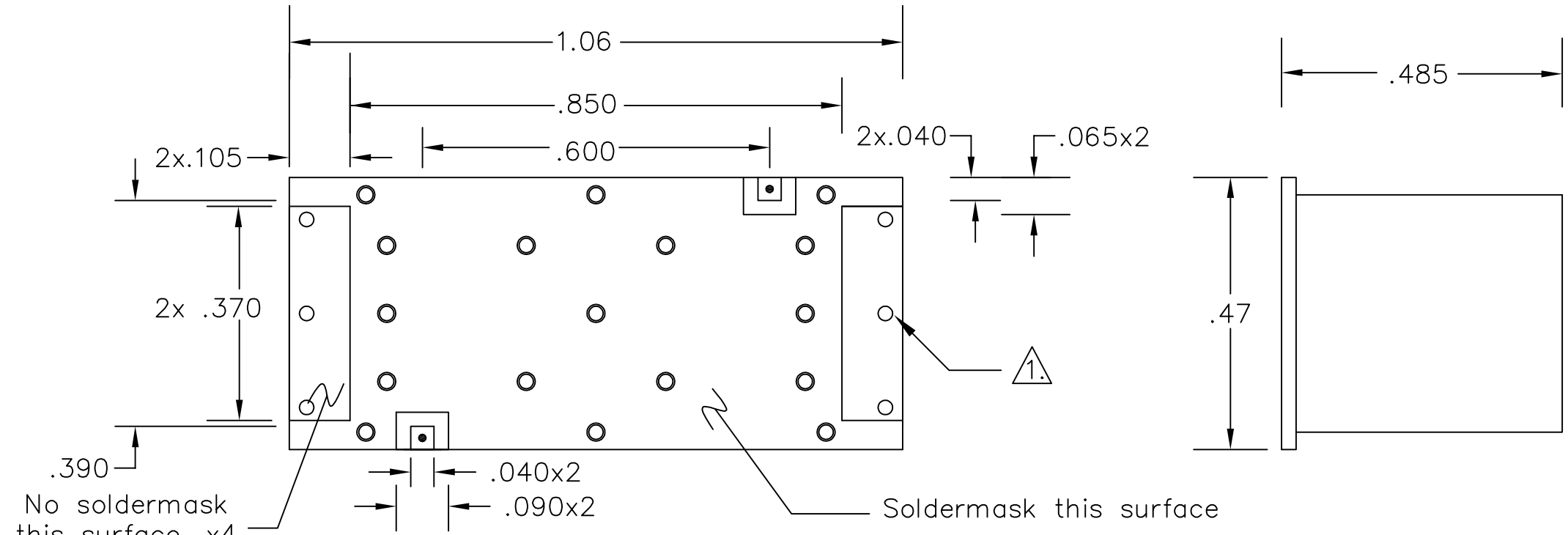


REVISIONS			
REV	DESCRIPTION	DATE	APPROVED
1	remove thru holes	8/19/15	



1. End thru holes to be sealed both ends (6pls).

THE INFORMATION CONTAINED IN THIS DRAWING IS THE SOLE PROPERTY OF BREE ENGINEERING. ANY REPRODUCTION IN PART OR WHOLE WITHOUT THE WRITTEN PERMISSION OF BREE ENGINEERING IS PROHIBITED.

UNLESS OTHERWISE SPECIFIED DIMENSIONS ARE IN INCHES & TOLERANCES ARE: .XXX .XX ANGLES ±.005 ±.01	CAD GENERATED DRAWING DO NOT MANUALLY UPDATE		BEE BREE ENGINEERING	
	DWN LN	DATE	OUTLINE	
CHK LN	11/13/14			
MATERIAL	RESP ENG			
Nelco 4000-13EP	MFG ENG	SIZE	CAGE CODE	DWG NO
Finish	QUAL ENG	B	1K3H5	700241
Nickel	Scale for REFERENCE ONLY	SCALE 4:1	SHEET 1 OF 1	

B

B

A

A

4

3

2

1

4

3

2

1